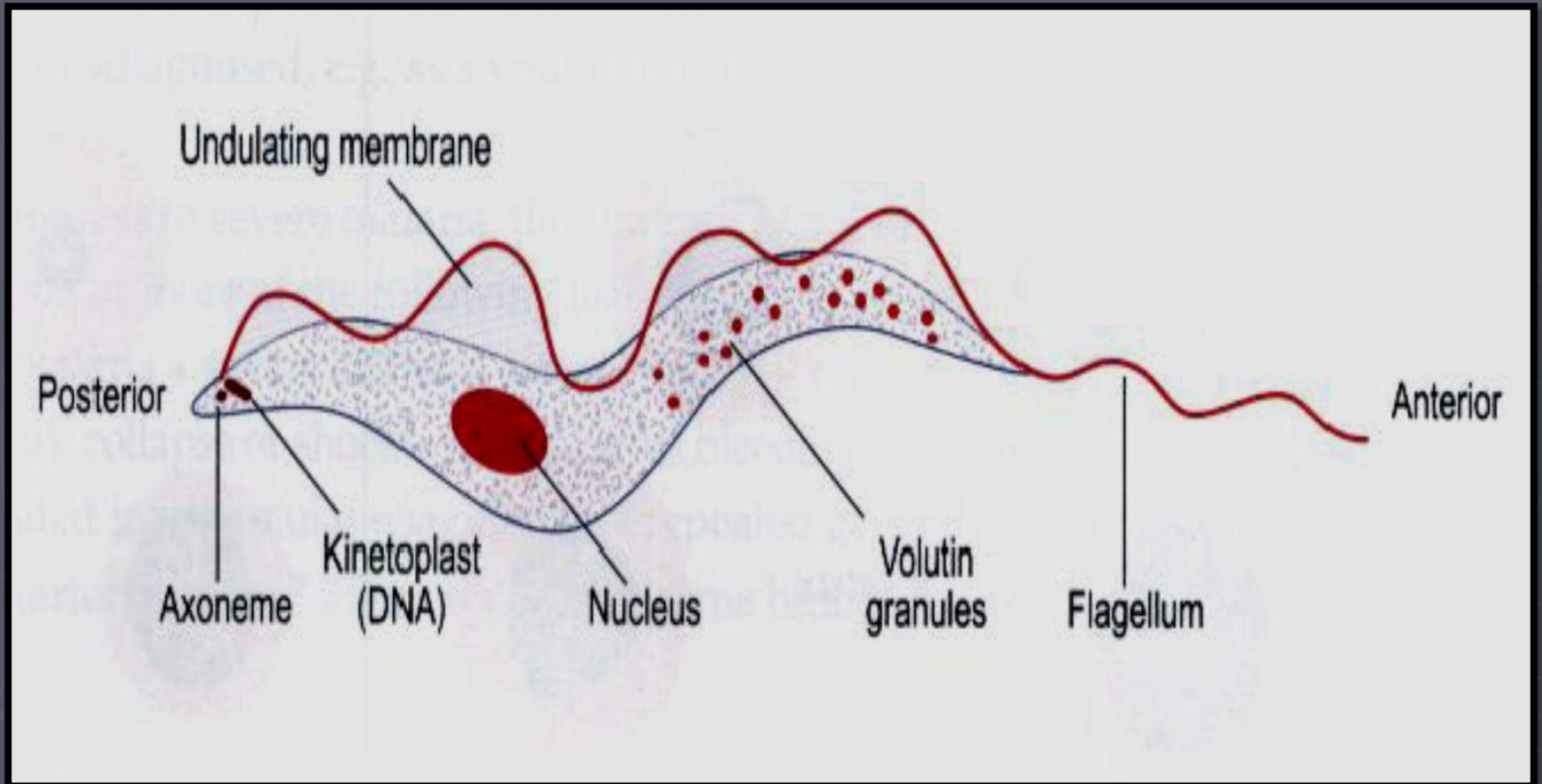


Haemoflagellates

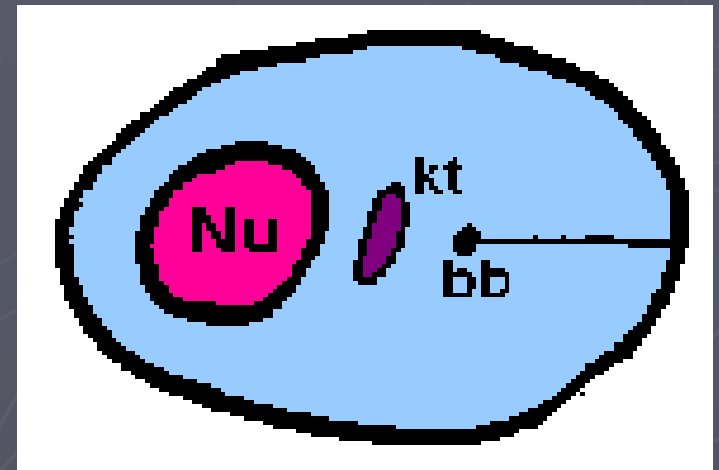
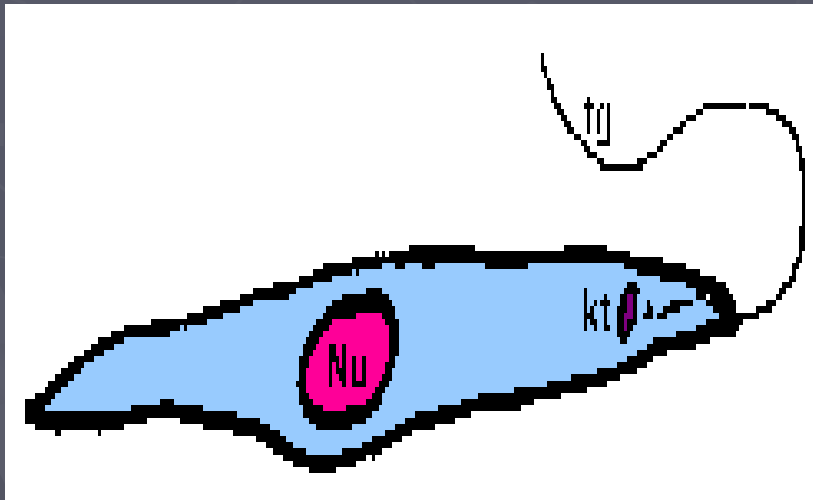


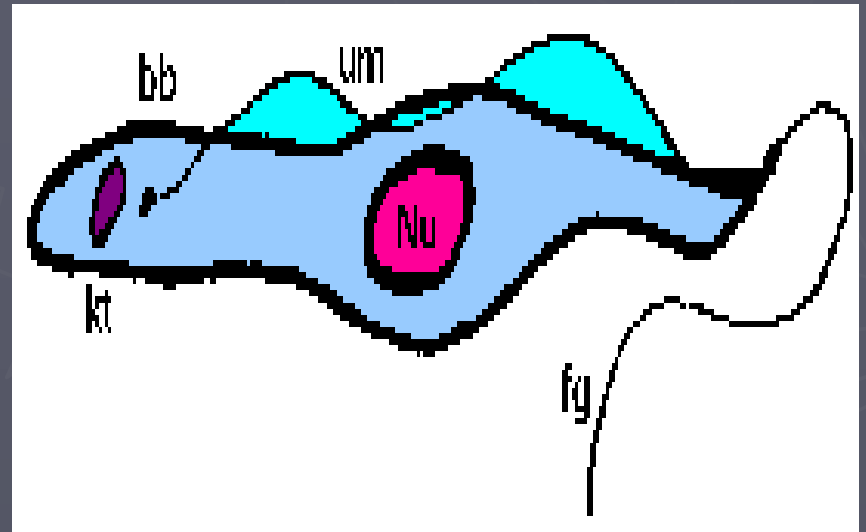
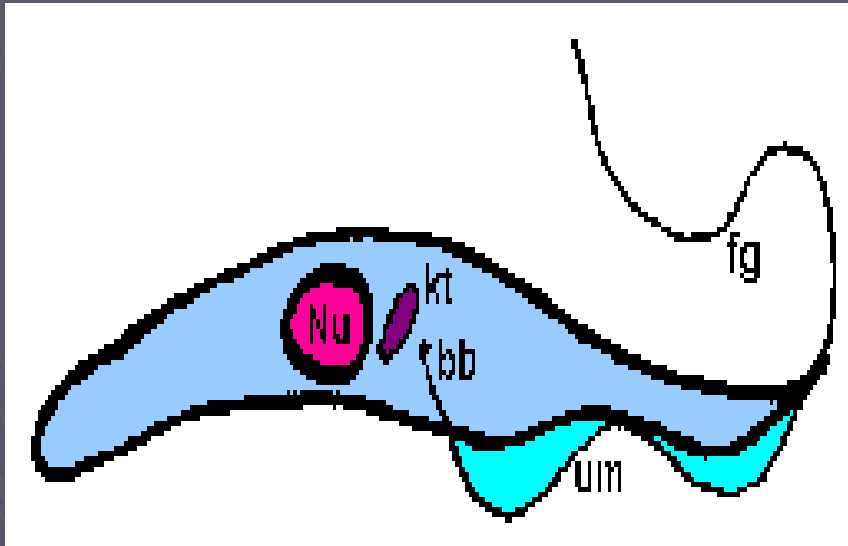
HAEMOFLAGELLATES

- **Kingdom:** Protista
- **Phylum:** Sarcomastigophora
- **Class:** Zoomastigophora
- **Order:** Kinetoplastida
- **Family:** Trypanosomatidae
- **Genus:** *Trypanosoma*
- **Species:** *brucei*, *cruzi*, *rangeli*

The haemoflagellates occur in various morphological forms . these forms . these forms are :

- amastigote
- promastigote
- epimastigote
- trypomastigot

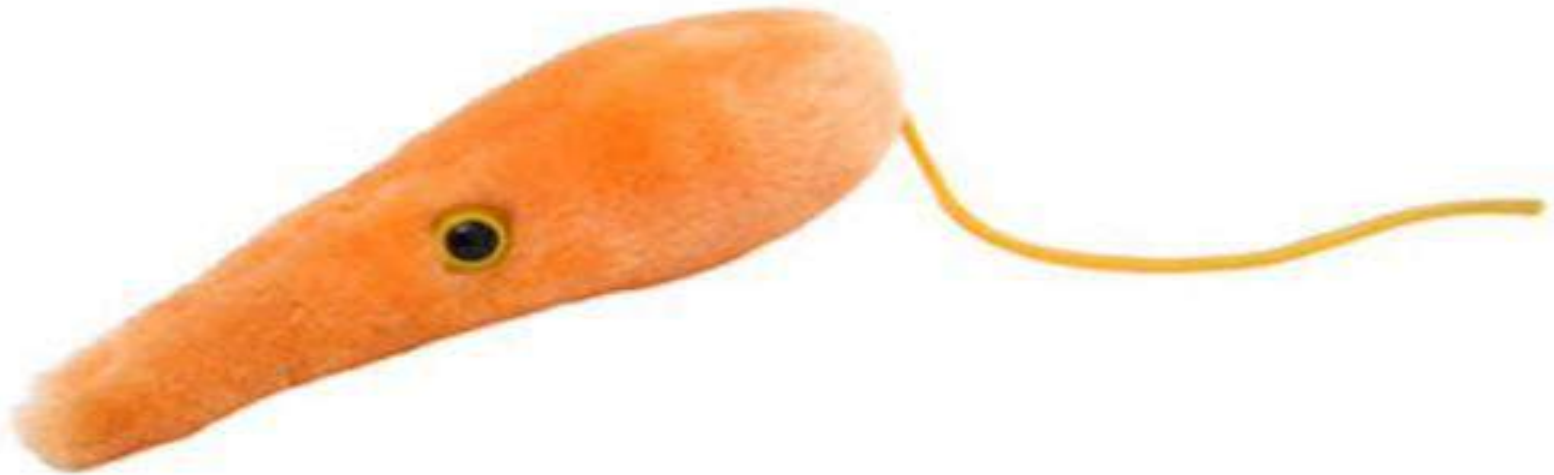






Leishmania

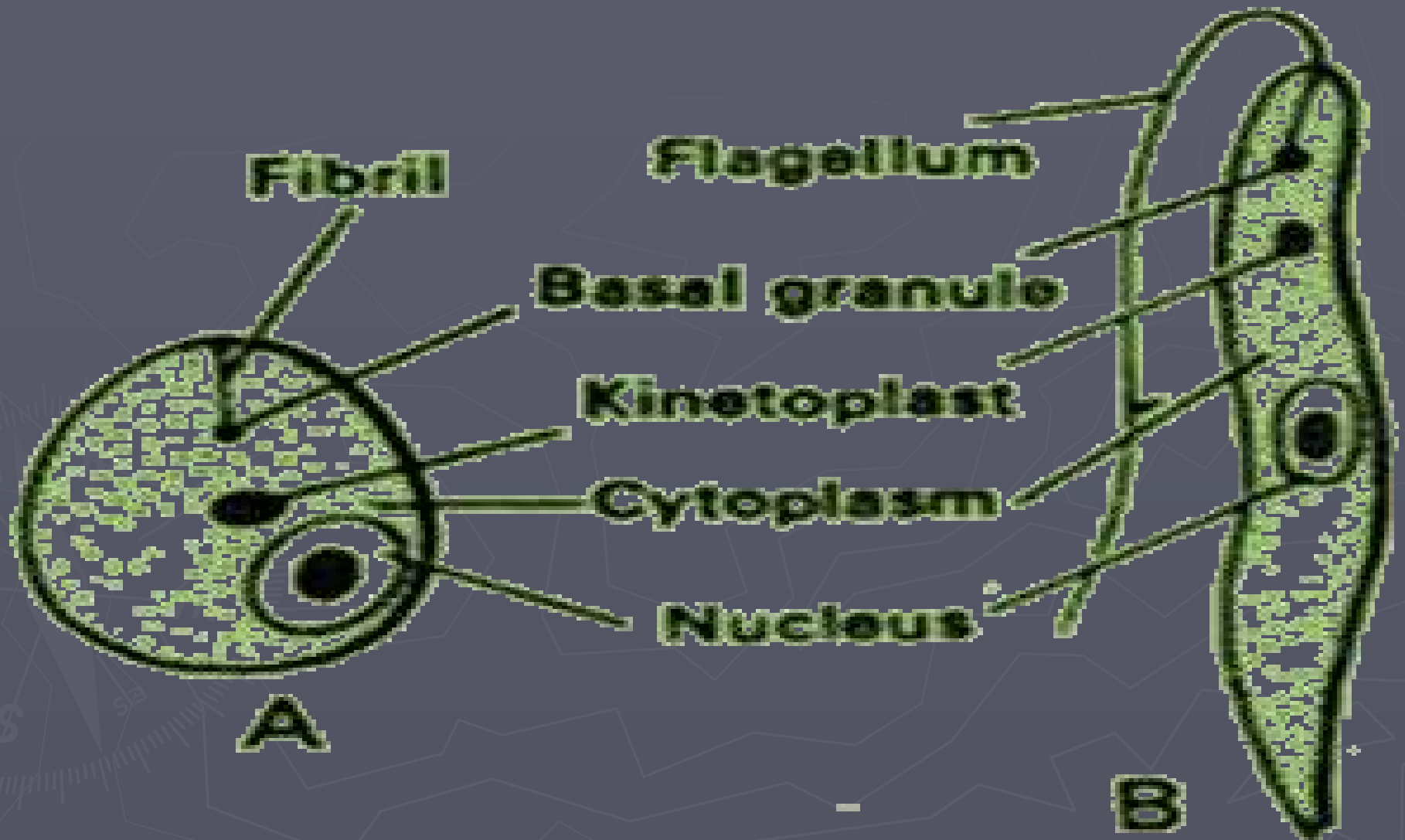
(*Leishmania tropica*)



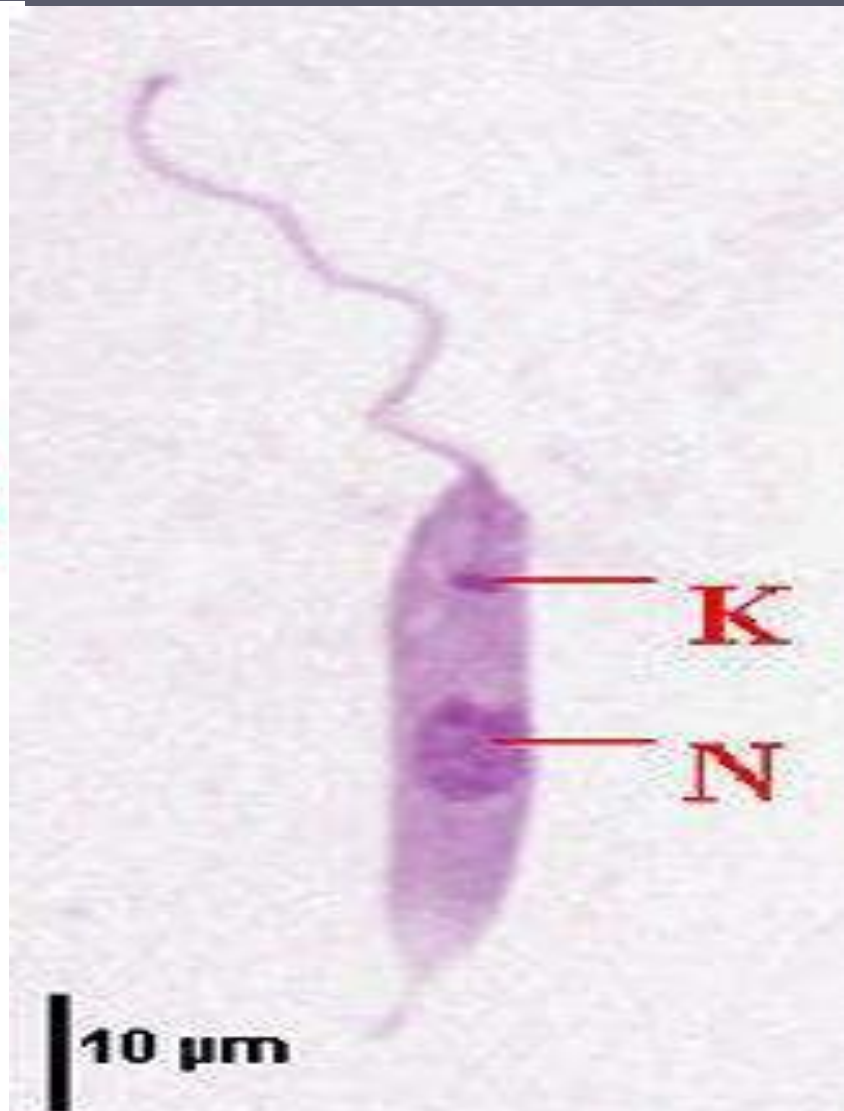
Leishmania spp.

- ▶ *L. donovani* : visceral Leishmaniasis (Kala-azar , Dum-Dum fever)
- ▶ *L. tropica* : Cutaneous Leishmaniasis (Bagdad boil , oriental sore)
- L. braziliensis* : Muco-cutaneous Leishmaniasis ▶
(espundia , uta)

Morphology

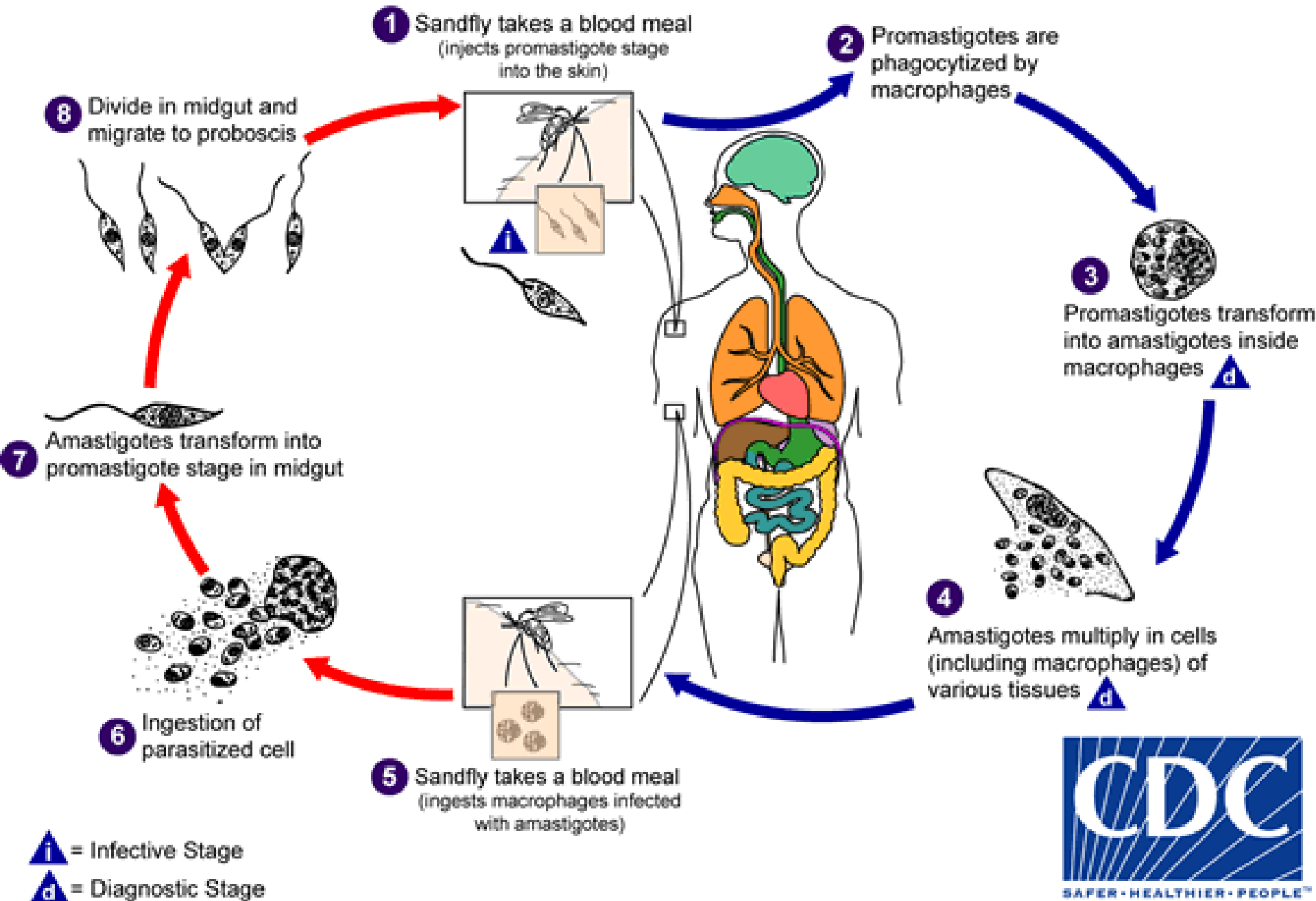


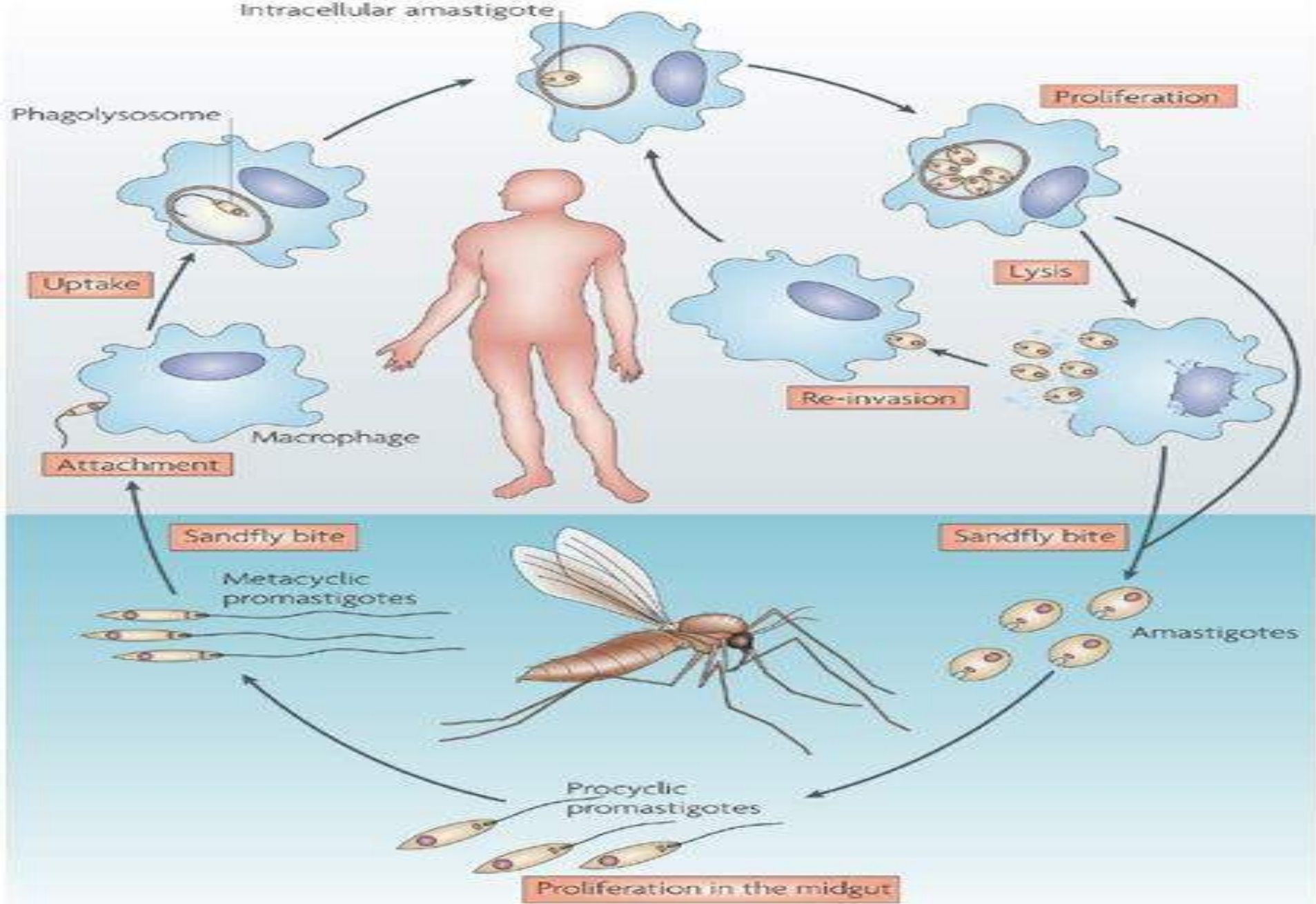
Morphology



Sandfly Stages

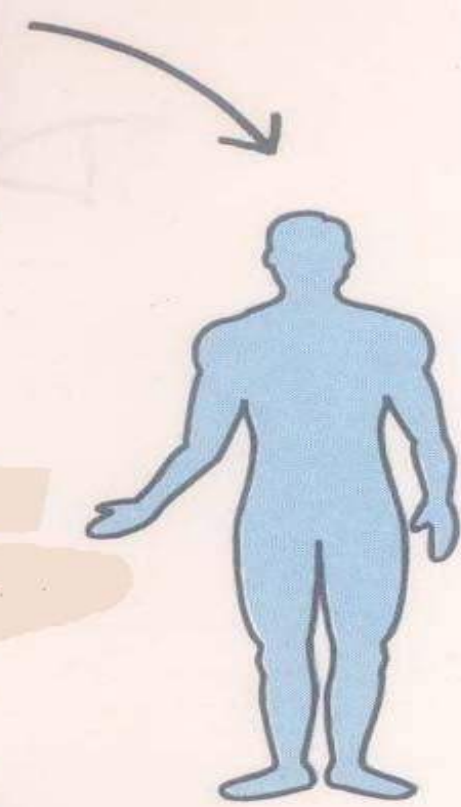
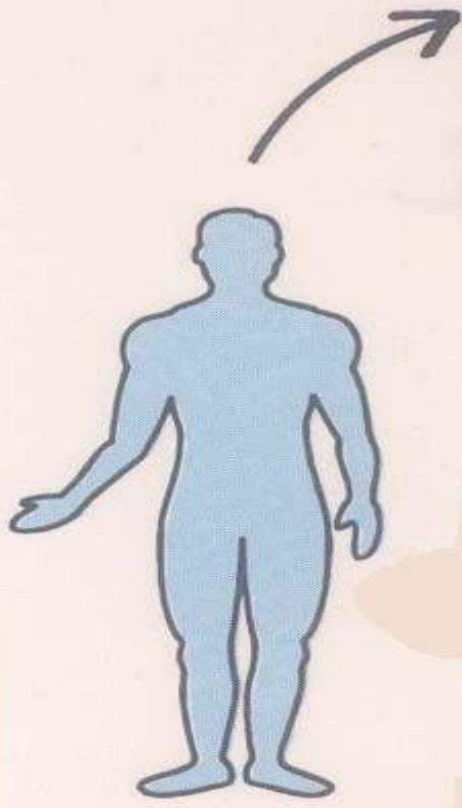
Human Stages





Routes of transmission









Pathology & Clinical manifestation

The background of the slide is a dark blue-grey color. On the left side, there is a faint, light-colored graphic of a compass rose with a needle pointing towards the top-left. The compass rose is overlaid on a topographic map, which consists of several concentric, irregular lines representing contour lines or elevation changes. The overall aesthetic is technical and scientific.

