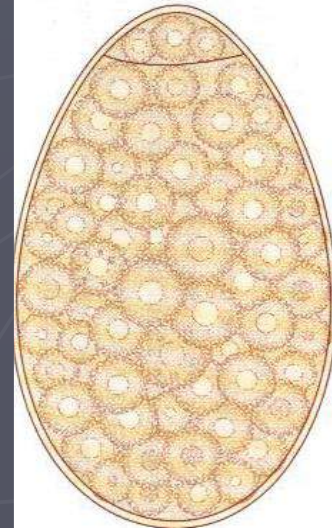
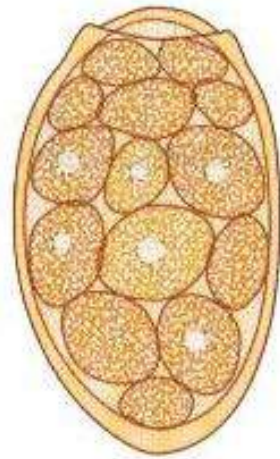


LUNG FLUKE

Paragonimus westermani



Adult



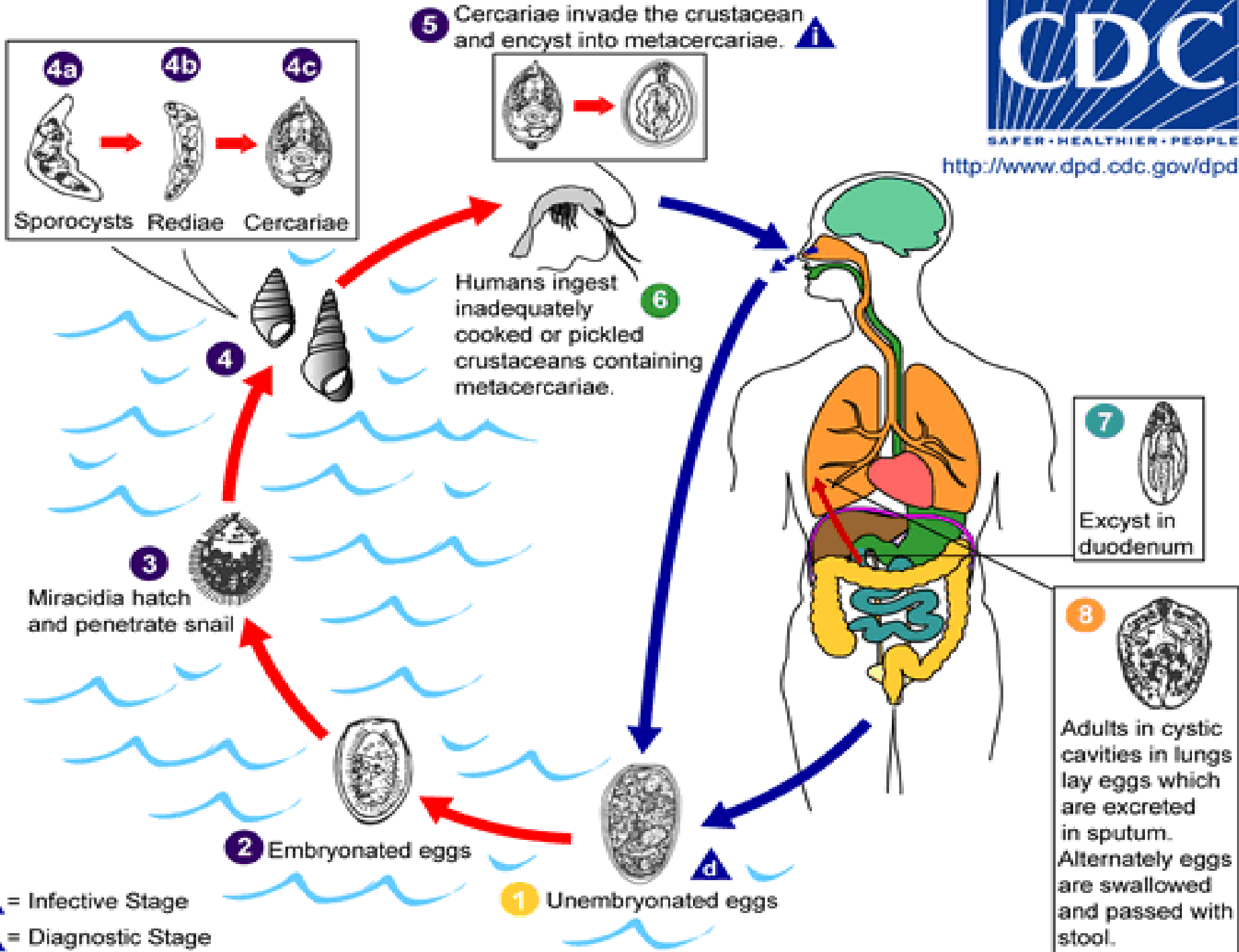
Ovum



80–120 x 50–60 μm

7–12 x 4–6 mm

3–5 mm thickness

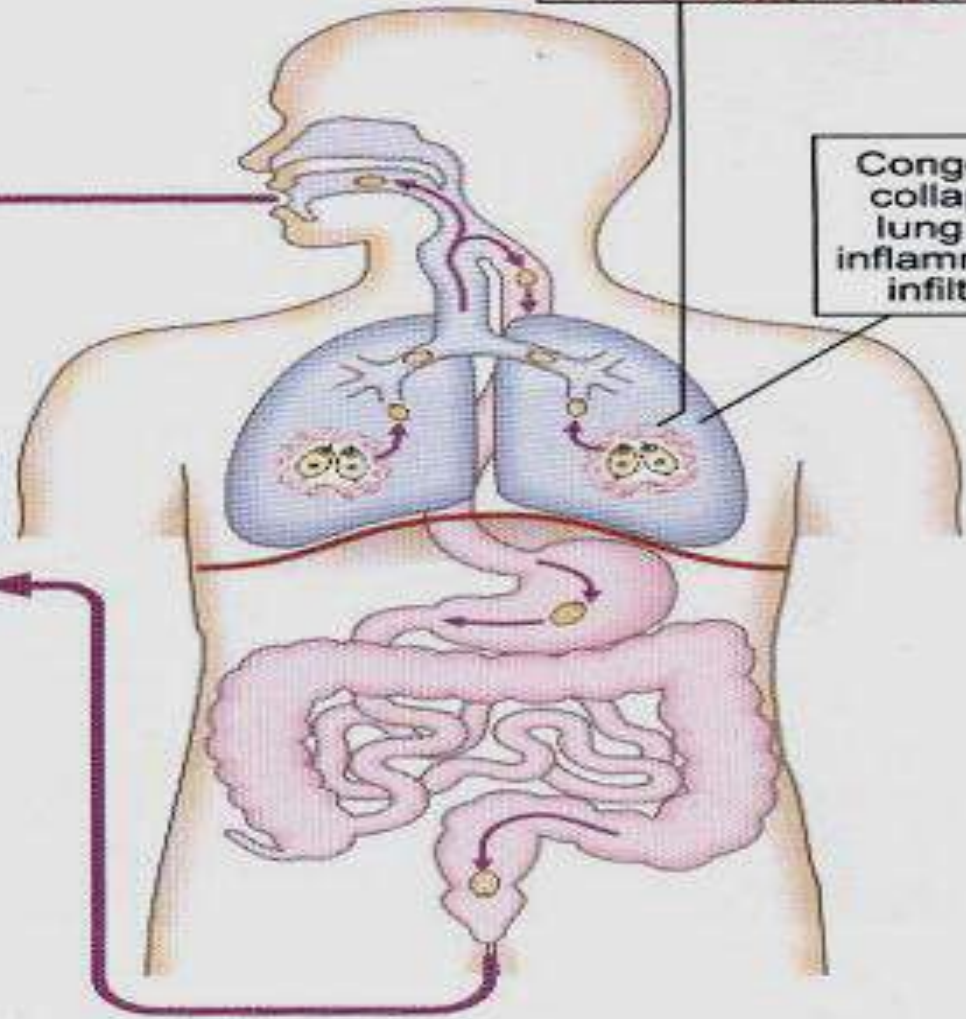


Life span 5–6 years



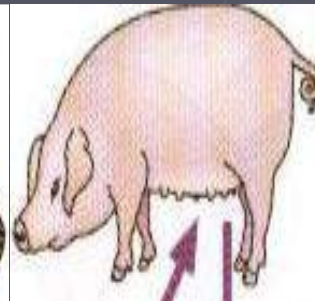
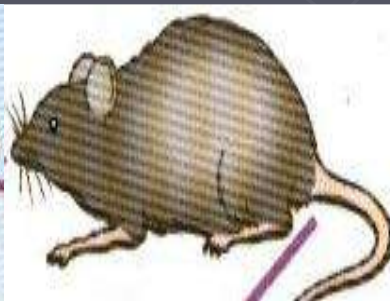
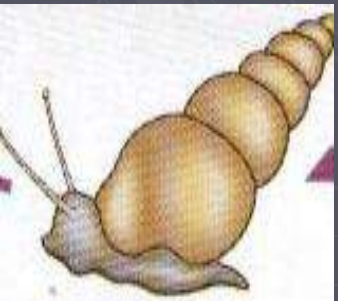
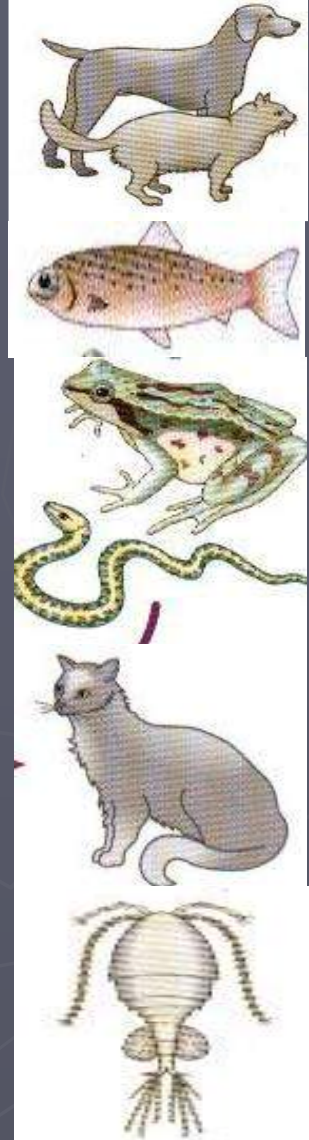
Congested collapsed lung with inflammatory infiltrate

Ova voided in sputum or swallowed and voided in faeces



Intestinal fluke

Fasciolopsis buski



Morphology

Adult

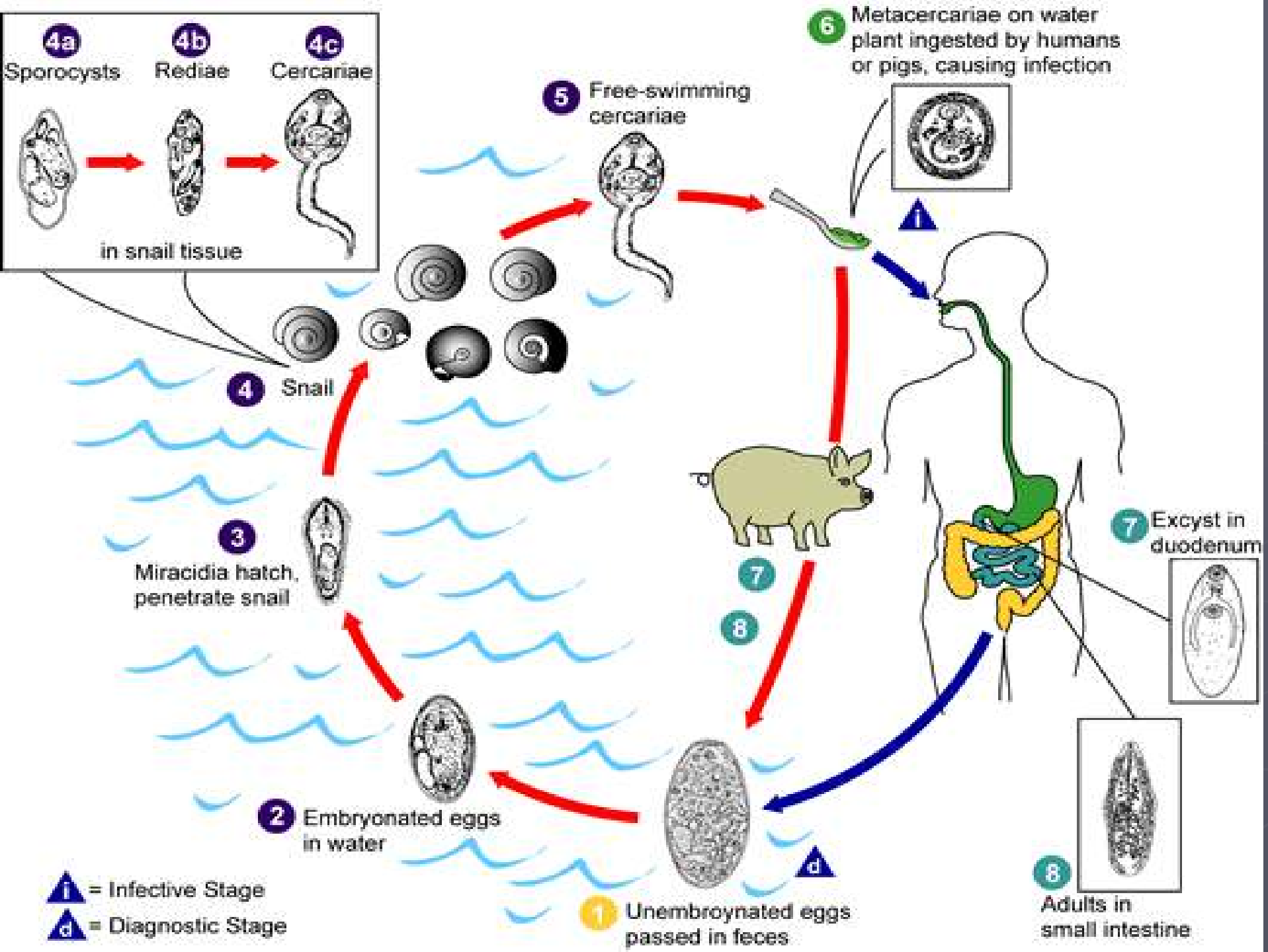


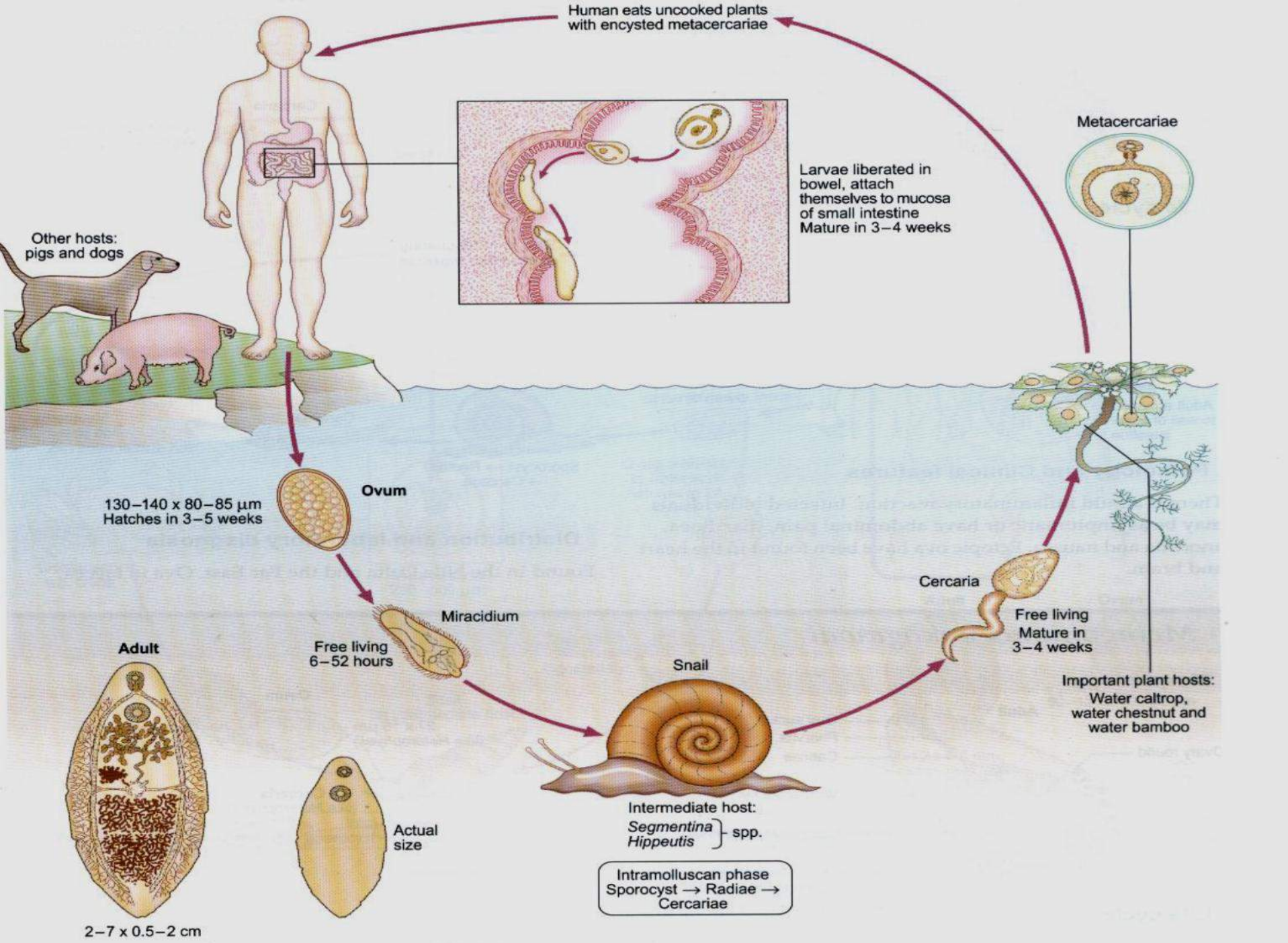
2-7 x 0.5-2 cm

130-140 x 80-85 μm
Hatches in 3-5 weeks

Ovum







Human eats uncooked plants with encysted metacercariae

Other hosts: pigs and dogs

Metacercariae

Larvae liberated in bowel, attach themselves to mucosa of small intestine
Mature in 3-4 weeks

130-140 x 80-85 μm
Hatches in 3-5 weeks

Ovum

Miracidium

Free living
6-52 hours

Snail

Intermediate host:
Segmentina } spp.
Hippeutis }

Cercaria

Free living
Mature in 3-4 weeks

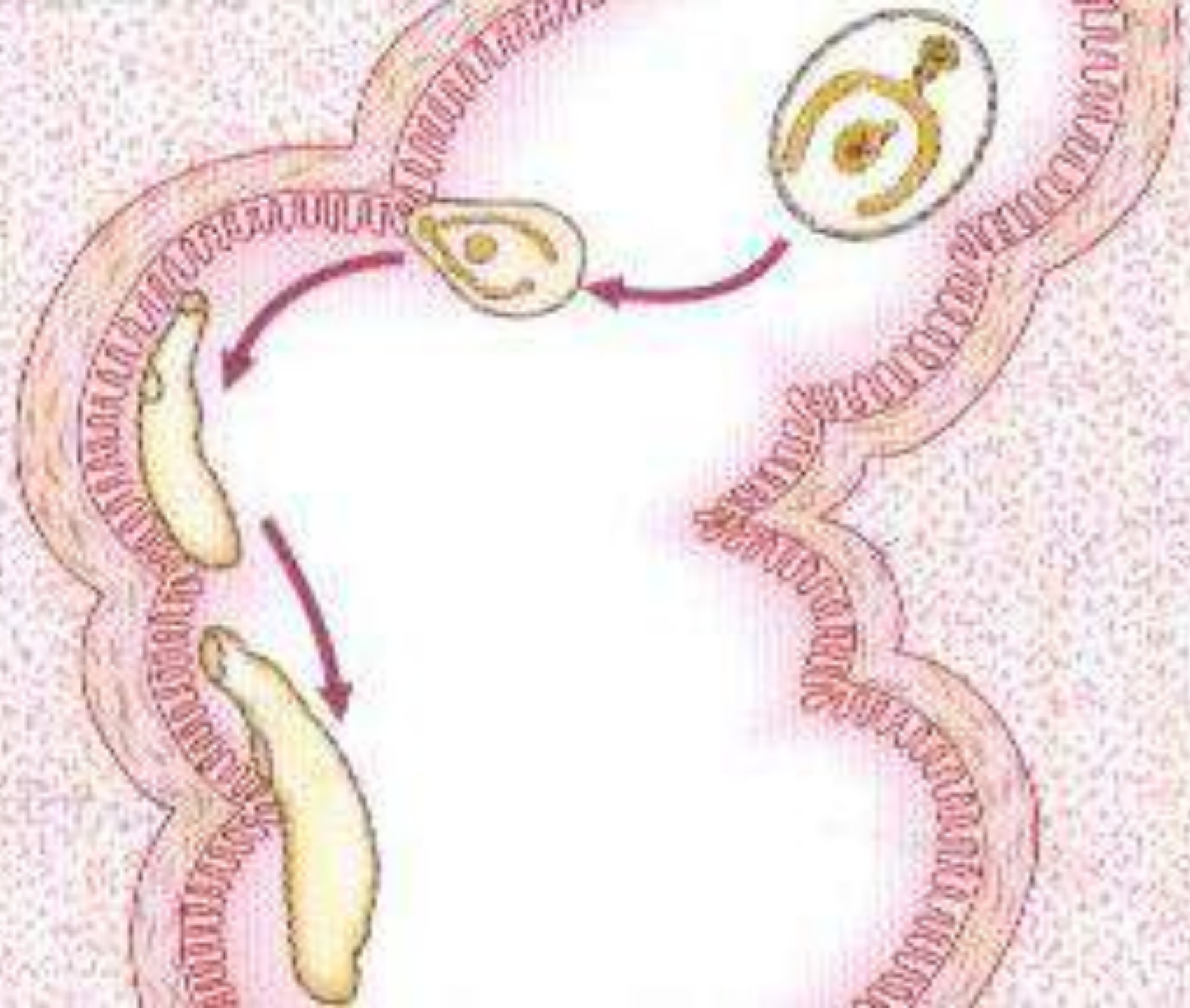
Important plant hosts:
Water caltrop,
water chestnut and
water bamboo

Adult

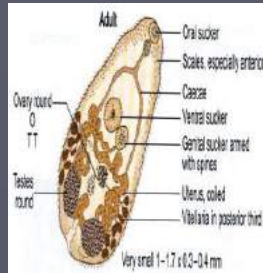
2-7 x 0.5-2 cm

Actual size

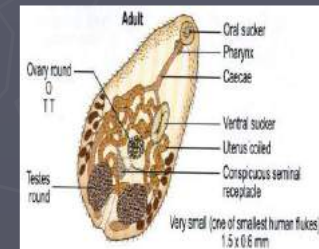
Intramolluscan phase
Sporocyst → Radiae → Cercariae



Heterophyes heterophyes

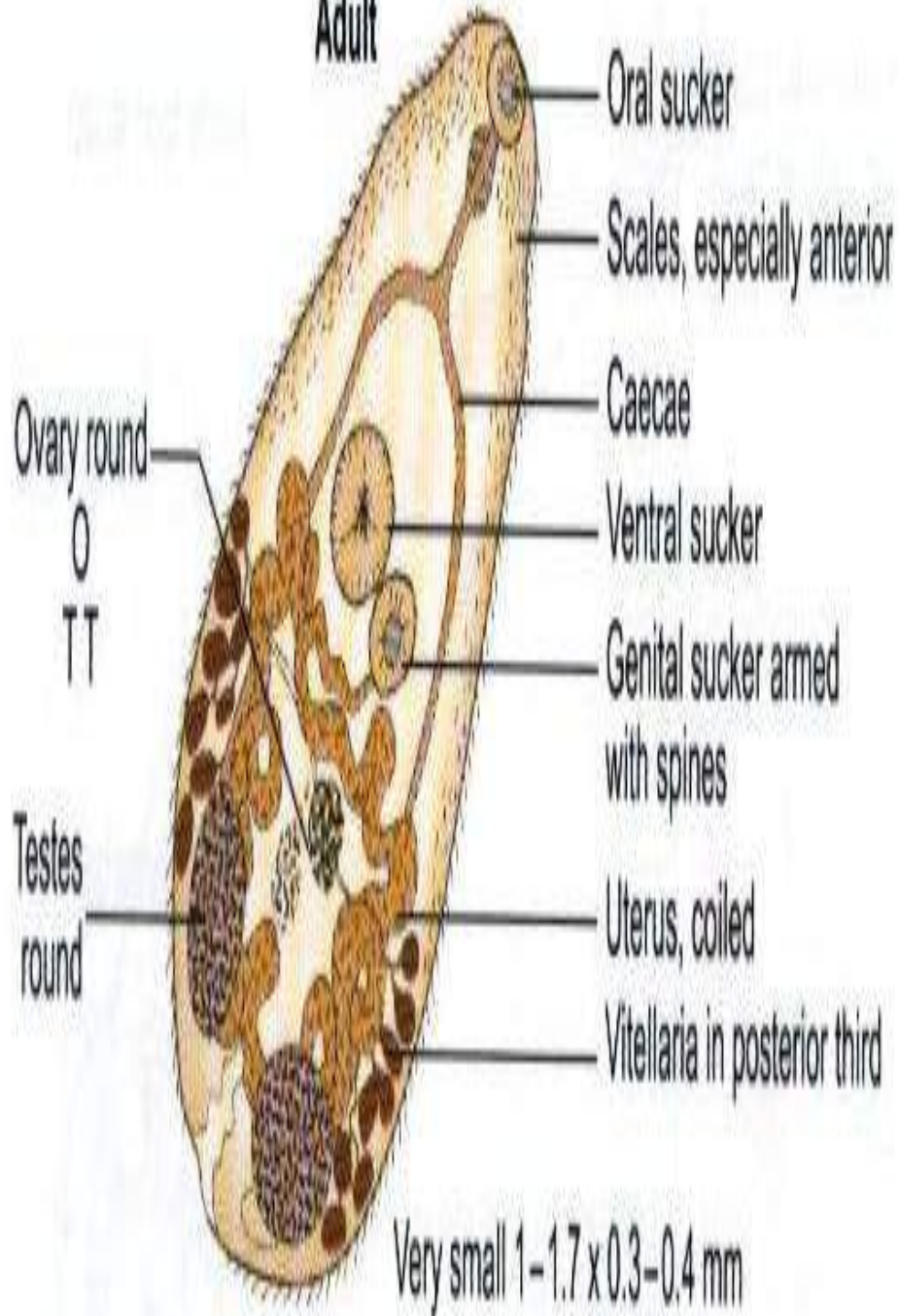


And



Metagonimus yokogawai

Adult

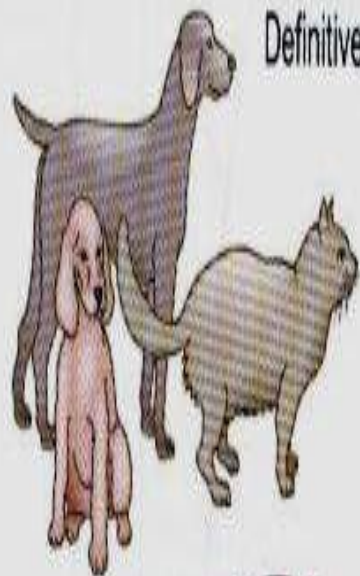


Ovum



Cercaria





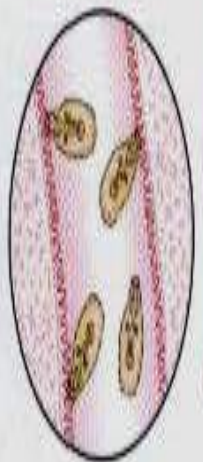
Definitive hosts:



Raw or inadequately cooked fish ingested



Metacercariae excyst
Adult attached to wall of small intestine



1st intermediate host:

Ovum direct to



Sporocyst → Rediae → Cercaria

Cercaria



Metacercaria on or in mullet

