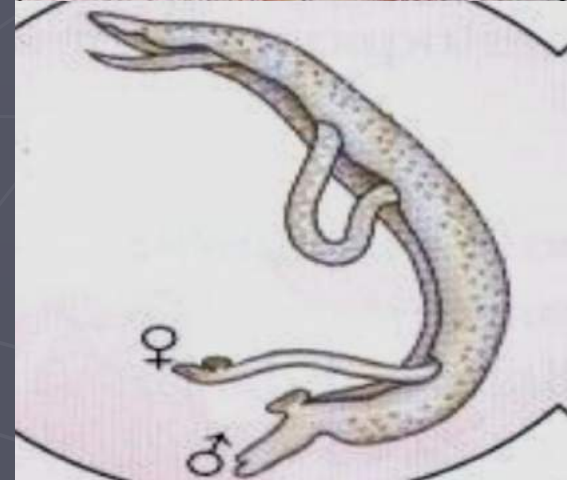
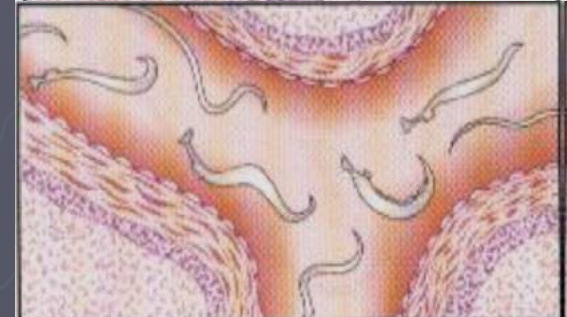
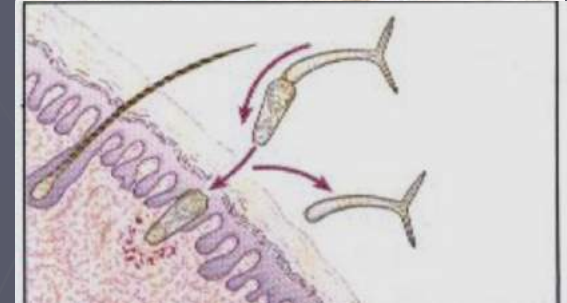
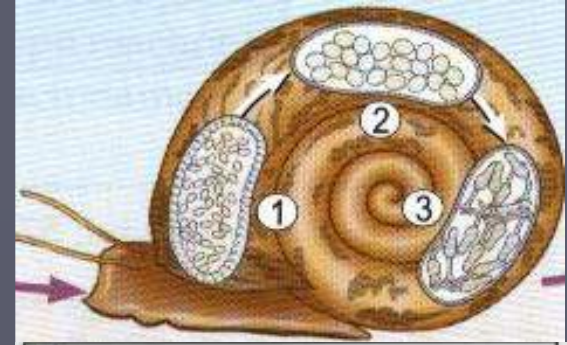


Class : Trematoda (Flukes)



- **Blood species** : *Schistosoma haematobium* , *S. mansoni* , *S. japonicum* .
- **Intestinal species** : *Fasciolopsis buski* , *Heterophyes heterophyes* .
- **Tissue species**: a- Liver : *Fasciola hepatica* , *F. gigantica* , *Clonorchis sinensis* ,
b- Lung : *paragonimus westermani* . ►

Blood species

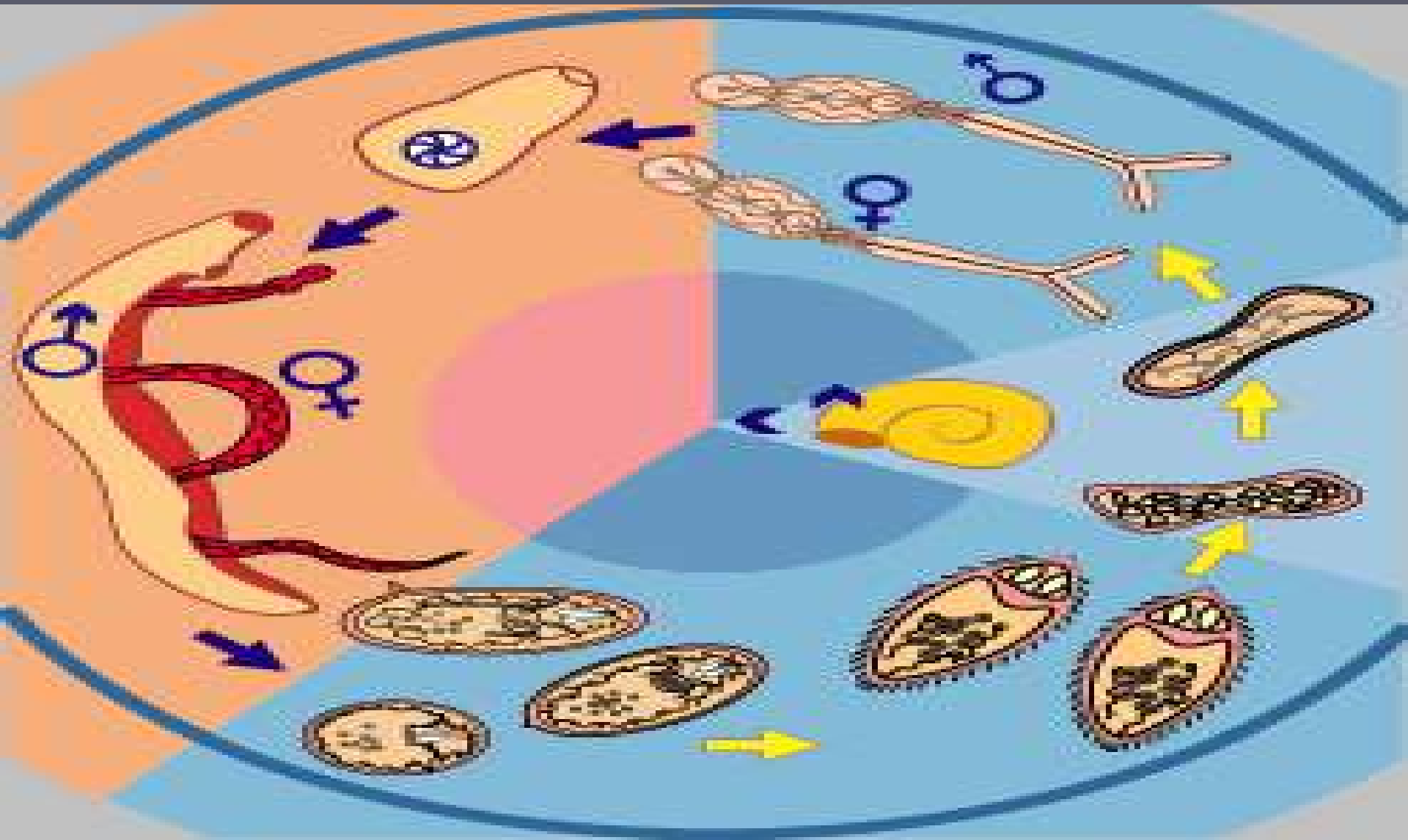
Schistosoma spp

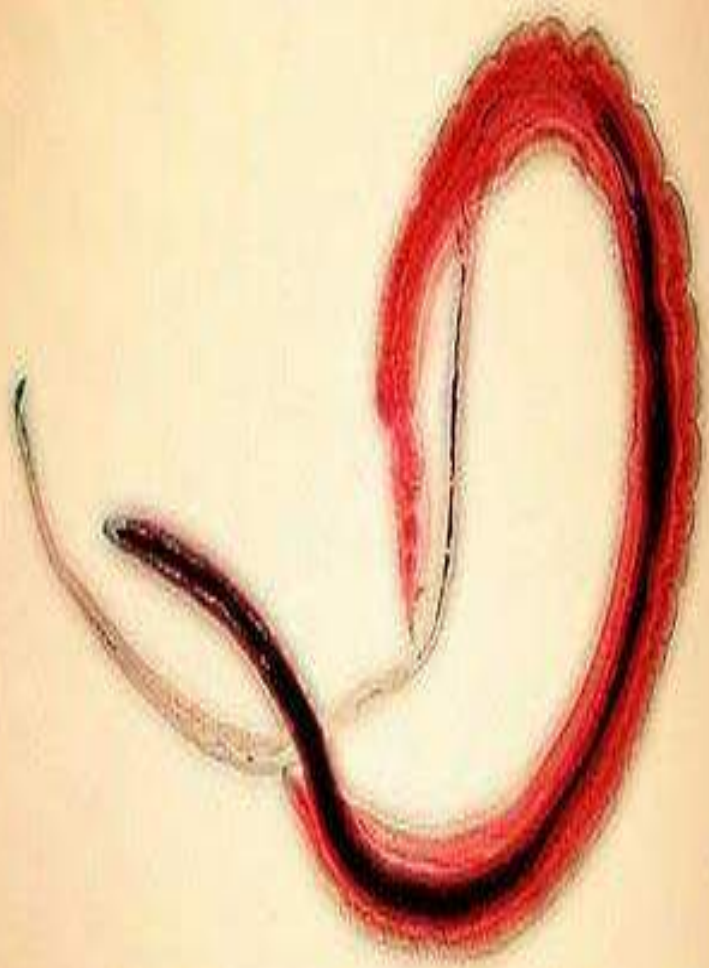
- *Schistosoma hematobium*

- *S. mansoni*

- *S. japonicum*

Morphology





Forcucercus cercaria





S. haematobium



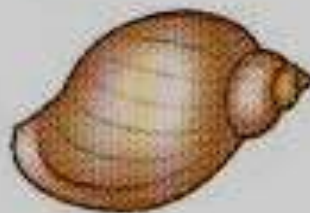
4–5 testes

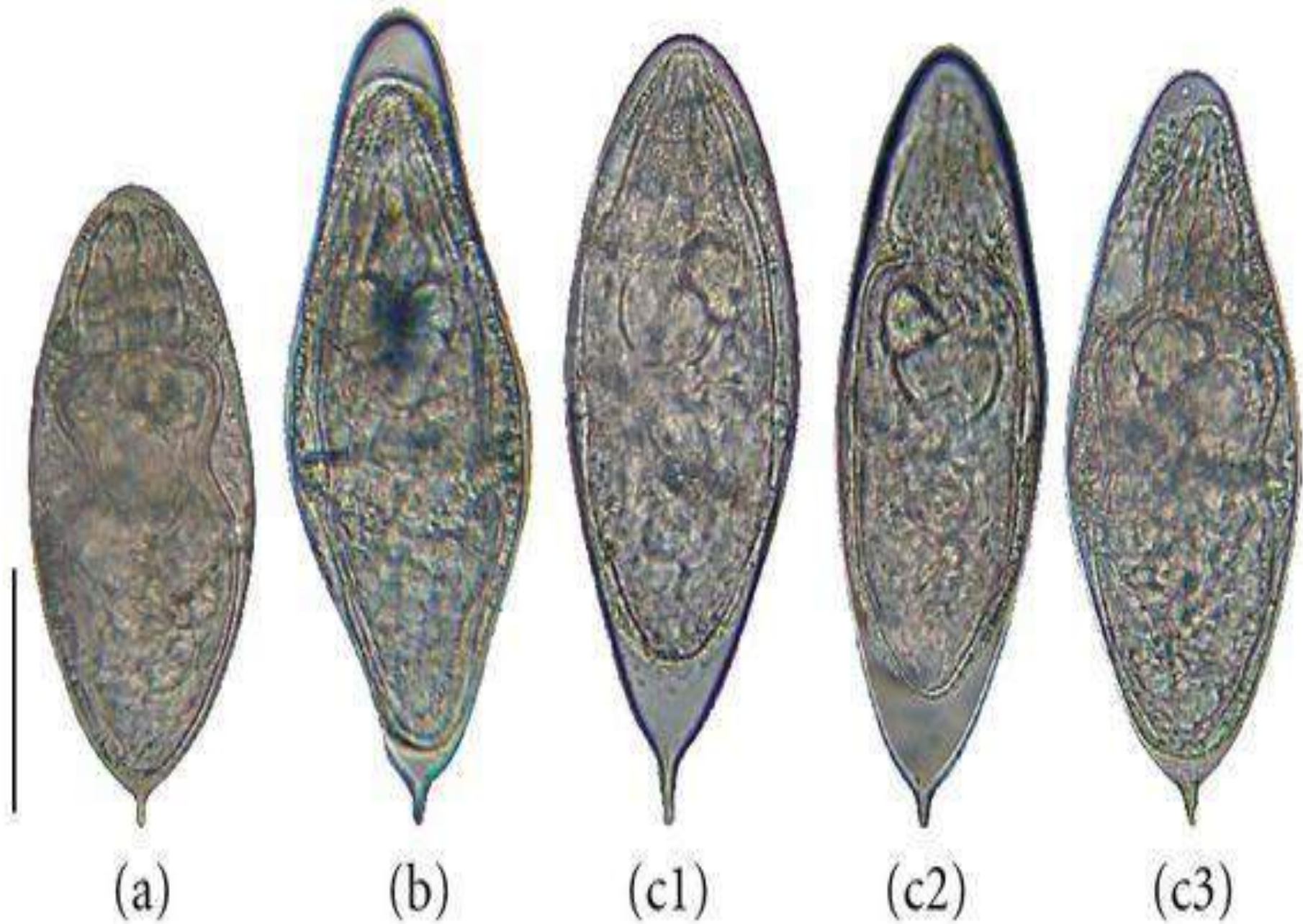
Tegument slightly
tuberculated



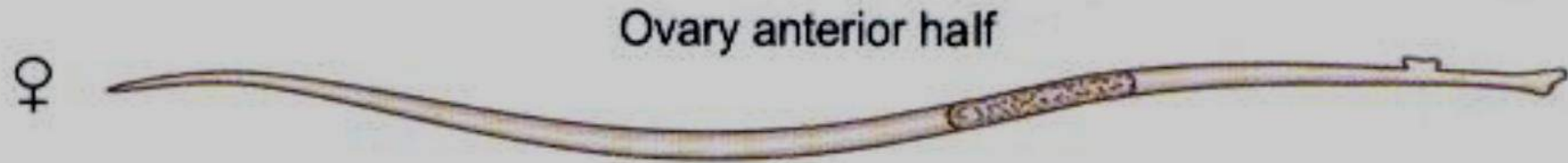
Terminal spine
112–170 x 40–70 μm

Bulinus

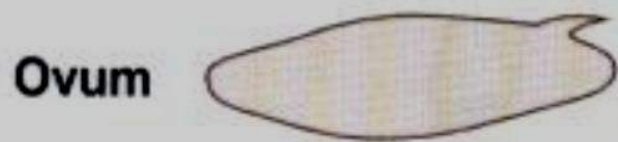




S. mansoni



8–9 testes
Tegument coarsely
tuberculated



1–4 ova in uterus

Lateral spine
140–180 x 45–70 μm

Host: *Biomphalaria*

